

# 200T/H Auto Chemistry Analyzer BK-200 (Previous BK-200mini)



### Overall appearance:

One probe for reagents and samples;  
One mixer; Washing probe.

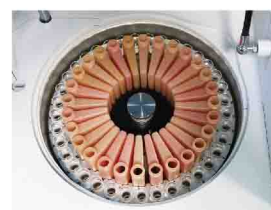


### Features:

- ①. 37 Sample positions.
- ②. 28 Reagent positions.
- ③. 48 Reaction cuvettes.
- ④. 200 Tests per hour.
- ⑤. Probe with anti-collision function, liquid level detection function.



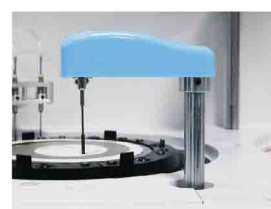
**Reaction Tray**  
37±0.2°C,  
real-time monitor.



**Reagent Tray**  
Refrigerated tray with  
independent switch.



**Sample Needle**  
Liquid level sensor function.  
Anti-collision function. Reagent  
volume real-time detection.



**Mixer Probe**  
Teflon coating to avoid  
cross contamination.



**Washing Probe**  
Independent 2-step  
washing system.



**LAN Port  
Access**

### Parameters:

Model	BK-200	
Overall Performance	Throughput	200 Tests/hour
	Analysis Method	End-point, Fixed-time, Rate(Kinetic)
	Certificates	CE, FDA, ISO9001, ISO14001, ISO13485
Sample & Reagent System	Sample Positions	37 sample positions
	Reagent Positions	28 reagent positions
	Sample Volume	2~70µl
	Reagent Volume	20~350µl
	Probe	Teflon coating, with anti-collision function, liquid level detection function
	Probe Washing	Automatic washing interior and exterior
	Reagent Cooling	Refrigerated tray with independent switch
Reaction System	Temperature Control	37±0.2°C
	Cuvettes	48 reusable cuvettes, optical length 6mm
	Mixer Probe	Independent stirring
	Washing	Automatic cuvettes washing
	STAT Function	YES
Optical System	Light Source	6V/10W halogen lamp
	Spectrophotometry	Post-spectral spectrophotometry
	Wavelength	340, 405, 450, 480, 505, 546, 570, 600, 630, 700, 750, 800nm
	Absorbance	0~3.0Abs
Calibration & QC	Calibration	Linear: K factor, 1-point, 2-point and multipoint linear Non-Linear: Spline, Polygon, Index, Ogarithm, Logit-4P, Logit-5P
	Quality Control	Real-time QC, Westgard multi rule, Cumulative sum check, Twin Plot(2D)
Data Management	Software	Windows 7/8/10, 32 or 64 bit
	LIS System	Bi-direction, support HL7 protocol
	Interface	LAN port access
	Printer	External, multiple reporting mode available
Working Conditions	Power Supply	AC220V±10%, 50/60Hz, 110V±10%, 60Hz, 300W
	Temperature	15~30°C
	Water Consumption	Deionized water: <5L/H
Size & Weight	Humidity	40%~85%
	External Size (W*D*H)	625*425*460mm
	Net Weight	36kg
	Package Size (W*D*H)	728*530*884mm
	Gross Weight	55kg